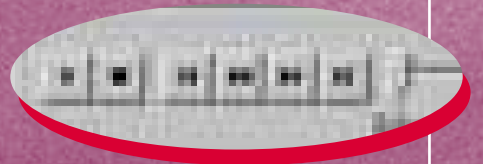


Imagination. Solutions.

**NEC**  
NEC Infrontia



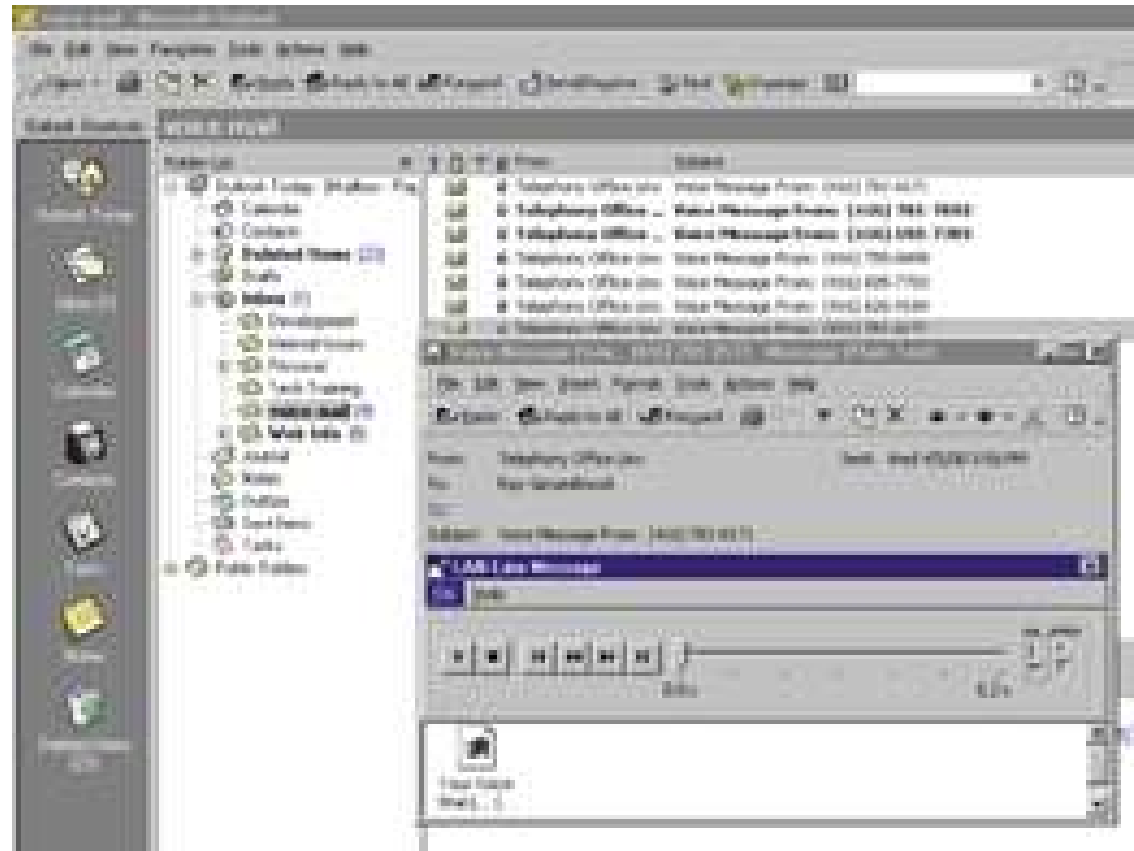
More than just  
voice messaging



**DXE Smart Office  
Messaging  
Solutions**

Nitsuka  
**DXE**

# Point and click Voice Messaging



**The problem most business users have today is information overload. This is a reflection of both the way we work and the easy accessibility to information brought about by advances in database management and the internet. Never before has information been so accessible.**

Messaging technology has undergone parallel changes. However message overload is also a major problem. We all require up to date contact but do not have the time to sift through the endless reams of unimportant messages that bombard us every day.

The problem with voice mail is that you need to access the voice mail system to sift all those messages before you can get to the one you really want.

The DXE Smart Office unified messaging technology changes all that.

Today's users want access to their messages quickly. They also require simplified access. The DXE meets both those requirements by providing voice messaging solutions that can deliver voice messages to your Microsoft Outlook inbox.

We all use our PC to access email messages, why not use the same PC to access our voice mail? DXE Smart Office is an all in one messaging solution that when integrated with Microsoft Outlook and other MAPI compliant email systems can deliver all your emails, voice messages and faxes into one common Outlook Inbox.

Imagine being able to treat your voice messages like an email. Click to scroll, click to listen and then forward that voice message to another email user, anywhere in the world.

DXE Smart Office unified messaging, turns your voice messages into emails. This really is messaging for the 21st. Century.

# What more does DXE Smart Office give you!

Although DXE Smart Office, is a leading edge Windows NT\* based messaging platform we have not sacrificed any of the traditional features that users want from a voice messaging system.

## Voice Messaging

Voice Mail allows users to be given electronic mailboxes into which callers can leave messages. Callers can, for example, on reaching a busy or absent extension be diverted directly to the required mailbox. Callers will receive a personalised greeting and if required reroute to the operator or dial another extension.

## Automatic Operator

Use the automatic operator to take pressure off busy operators. Using customised voice prompts Automatic Operator can answer callers, give out a greeting and route the caller to the required extension or department.

## Conversation Recording

How often have you found that you would like to record part or all of your conversation? With DXE Smart Office any conversation can be recorded into your mailbox at the touch of a button.

## Fax Mail

For your eyes only! Have your personal faxes sent direct to your Outlook inbox. The system will notify you on receipt so that you can nominate which fax machine to deliver the fax to. Faxes can be faxed or emailed anywhere in the world.

## Supporting your business 24 hours a day

DXE Smart Office messaging systems are designed specifically to integrate with our DXE ISDN Business Communication Systems. Tightly integrated with the DXE, Smart Office will give you the peace of mind from using an integrated system.

Using state of the art technology DXE Messaging Systems offer features that were previously only available to the big budget corporate user:

- ❖ **Caller Identification**  
Integrating with ISDN, DXE messaging systems let's you know who left the message before you listen.
- ❖ **Message Notification**  
Have the system call your phone or pager to inform you of message receipt.
- ❖ **Group Broadcast.**  
Save time sending copies of the same message. Create distribution lists to simply send copies of the same message to up to 10 recipients.
- ❖ **Multi-Lingual Support**  
All but the entry level Smart Office supports a range of foreign languages. Have your callers answered in their mother tongue. Run multi national support facilities based on Smart Office.
- ❖ **Call Screening**  
In the office but unavailable? Have the system answer the call requesting the caller to give their name. Know the name of caller before deciding to take call or diverting them to voice mail.
- ❖ **Speedcopy.**  
Copy a message to another person, appending additional comments if necessary.
- ❖ **Guest Mailboxes**  
If you have regular suppliers or visiting external personnel then why not give them their own temporary mailbox. Important suppliers can then always ring in to their "own" mailbox to pick up missed messages.
- ❖ **Announcements**  
Provide callers with instant information or let them chose from a menu the required information. Allocate DDI numbers to different announcements. This allows, for example, different departments to have their own individual greetings allowing callers to hear a specific greeting based on the DDI dialled.
- ❖ **Dial By Name**  
Don't know the person's or department's number? Using the built in directory to find the number required.
- ❖ **Message Alert**  
Message receipt can be used to light a Message Waiting Lamp on a keystation or POT's telephone. Keystation users can programme a soft key that lights on message receipt and gives one button access to the voice mail system.

## Growth for the Future

**All but the entry level DXE Smart Office products support integration with Microsoft Outlook. No one likes to feel they have bought a dead end product. That is why all DXE Smart Office PC based systems run on industrial strength Windows NT using modular upgradeable software. If initially, a more traditional voice messaging solution is required, you can have the confidence that should you require more sophisticated messaging then your DXE Smart Office can be upgraded to full unified messaging, just with a change of software.**

## Cross Reference Charts

The following chart indicates the specific features available to the different members of the DXE Smart Office family of products. Available features are shown as (Y), Optional Features as (Option).

Applicable DXE Systems	Smart Office Compact	Smart Office	Smart Office Professional
DXE24	Y	Y	Y
DXE32/96	Y	Y	Y
DXE600	Y	Y	Y
<b>Configurations</b>			
Ports	2 to 4	4 to 12	4 to 64
Voice Storage	3 Hours	100 Hours	450 Hours
No. of Mailboxes	300	1000	10000
<b>Automatic Operator</b>	Y	Y	Y
Multi-Lingual Support	N	Later	Y
Call Screening	Y	Y	Y
Dial By Name	N	Y	Y
CLI Call Routing	N	N	Y
<b>Voice Mail</b>	Y	Y	Y
Exit Mailbox and Return to Automatic Operator	Y	Y	Y
E-Mail Integration Option	N	Option	Option
Fax Mail	N	N	Option
Faxback	N	N	Option
Future Delivery Message	Y	Y	Y
Help	Y	Y	Y
<b>User Features</b>			
• One Touch Soft Key Operation	Y	Y	Y
• Personal Answering Machine	Y	Y	Y
• Recording a Conversation	Y	Y	Y
• Transfer a Call to a Mailbox	Y	Y	Y
• Transfer a Call to the Auto Operator	Y	Y	Y
• Time, Date, Sender Notification	Y	Y	Y
• Forward Message	Y	Y	Y
Mailbox, Guest	Y	Y	Y
Mailbox, General Delivery	N	Y	Y
Multiple Mailbox Greetings	N	Y	Y
Number of Greetings	1	5+	99
Mailbox Name	Y	Y	Y
Message Notification, Internal/External/Urgent	Y	Y	Y
Networking – AMIS	N	N	Option
Distribution Lists	Y	Y	Y
Confidential Message	Y	Y	Y
Voice Forms	N	N	Y
Unified Messaging Integration to MS Outlook	N	Option	Option
Remote Administration	Y	Y	Y

\*DXE Smart Office is DOS based.

**NEC**  
NEC Infrontia

**NEC Infrontia UK Limited**  
75 Swingbridge Road,  
Loughborough,  
Leics LE11 5JB,  
United Kingdom.

Tel: 01509 643100  
Fax: 01509 610206  
Web: [www.necinfrontia.co.uk](http://www.necinfrontia.co.uk)

NEC Infrontia UK Ltd is a wholly owned subsidiary of the NEC Infrontia Corporation of Japan.

Designed and produced by Lawrence & Pierce, Nottingham 2001.



Certificate No. ISO9002

CE 168 X



The DXE is produced at our high technology plants which are internationally accredited by BSI QA to ISO 9002 under registration numbers FM 26988 and FM 27505.

This publication provides outline information only which (unless specifically agreed by NEC Infrontia in writing) may not be used, applied or reproduced for any purpose or form part of any order or contract or be regarded as a representation relating to the products or services concerned. NEC Infrontia reserves the right to alter without notice the specification, design, price or conditions of supply of any product or service.

All trademarks acknowledged.